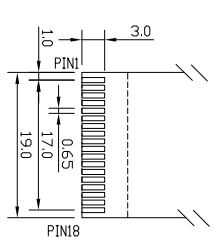
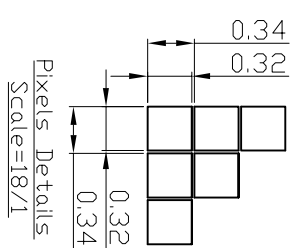


Dn PCB	H	L
BMO	6800	8080

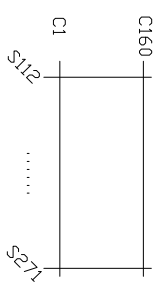
No.	Pin Name	Terminal2
1	VSS	
2	A0(RS)	
3	WR	
4	RD	
5	XCS	
6	RST	
7	VDD(3.3V)	
8	DB0	
9	DB1	
10	DB2	
11	DB3	
12	DB4	
13	DB5	
14	DB6	
15	DB7	
16	LED-	
17	ND	
18	LED+(3.3V)	



Interface



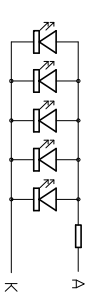
Pixel Details  
Scale=18/1



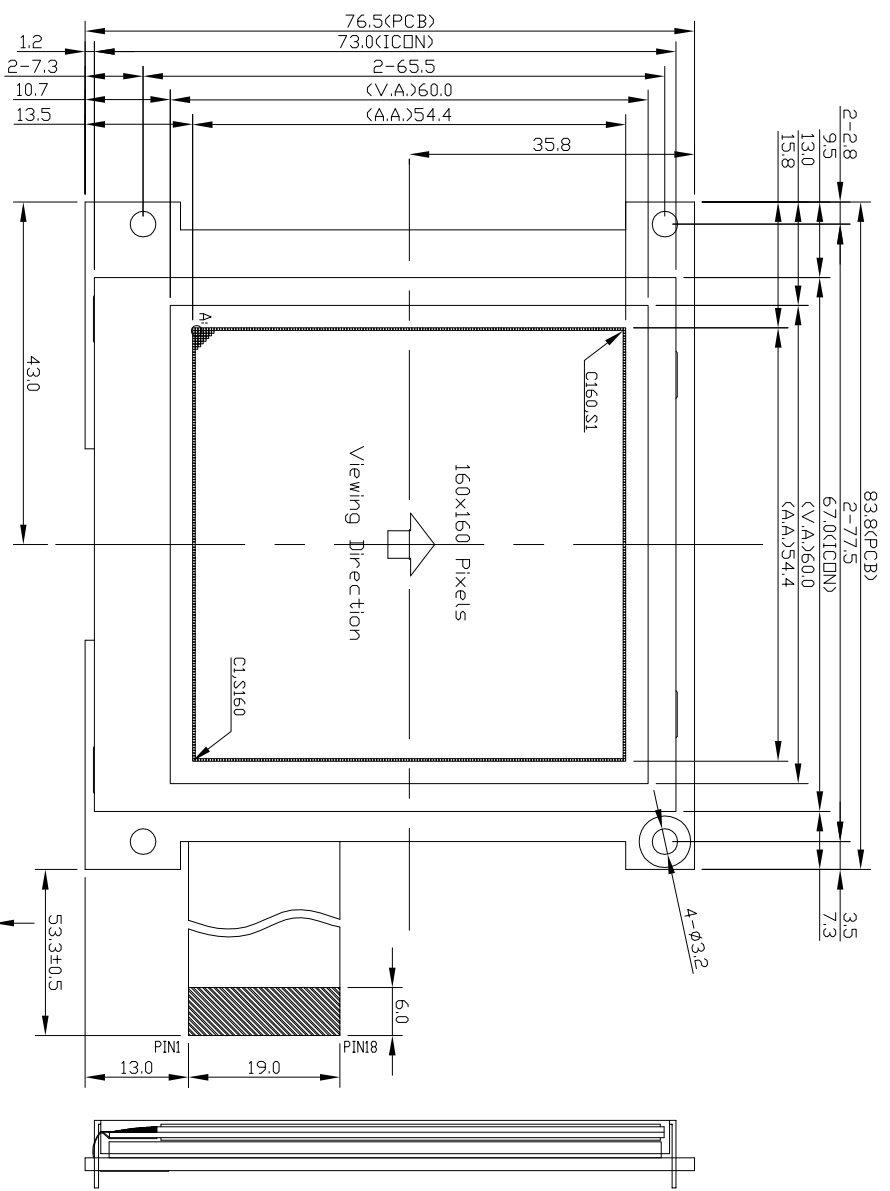
Wiring Details  
(Top View)  
Scale=12/1

# HOT DISPLAY

Dwg Title: HTM160160E-31W-N3P	
Material No: 10100158	Ver: A/0
Date: 2013-09-02	
Scale: 1/1	Unit: mm
Drawn: Andy!	Checked: Approved:
	Tol: ±0.5



Backlight Circuit  
Scale=free



*1. LCD Display Type	FSTN/B&W,Positive,Transflective,	*6. Storage Temp	-30°C~80°C
*2. Viewing Direction	6H	*7. Driver IC	UC1698
*3. LCD Driver Mode	1/160Duty,1/10Bias	*8. Backlight	White
*4. Operating Voltage	3.3V	*9. Rose	TBD
*5. Operating Temp	-20°C~70°C		